

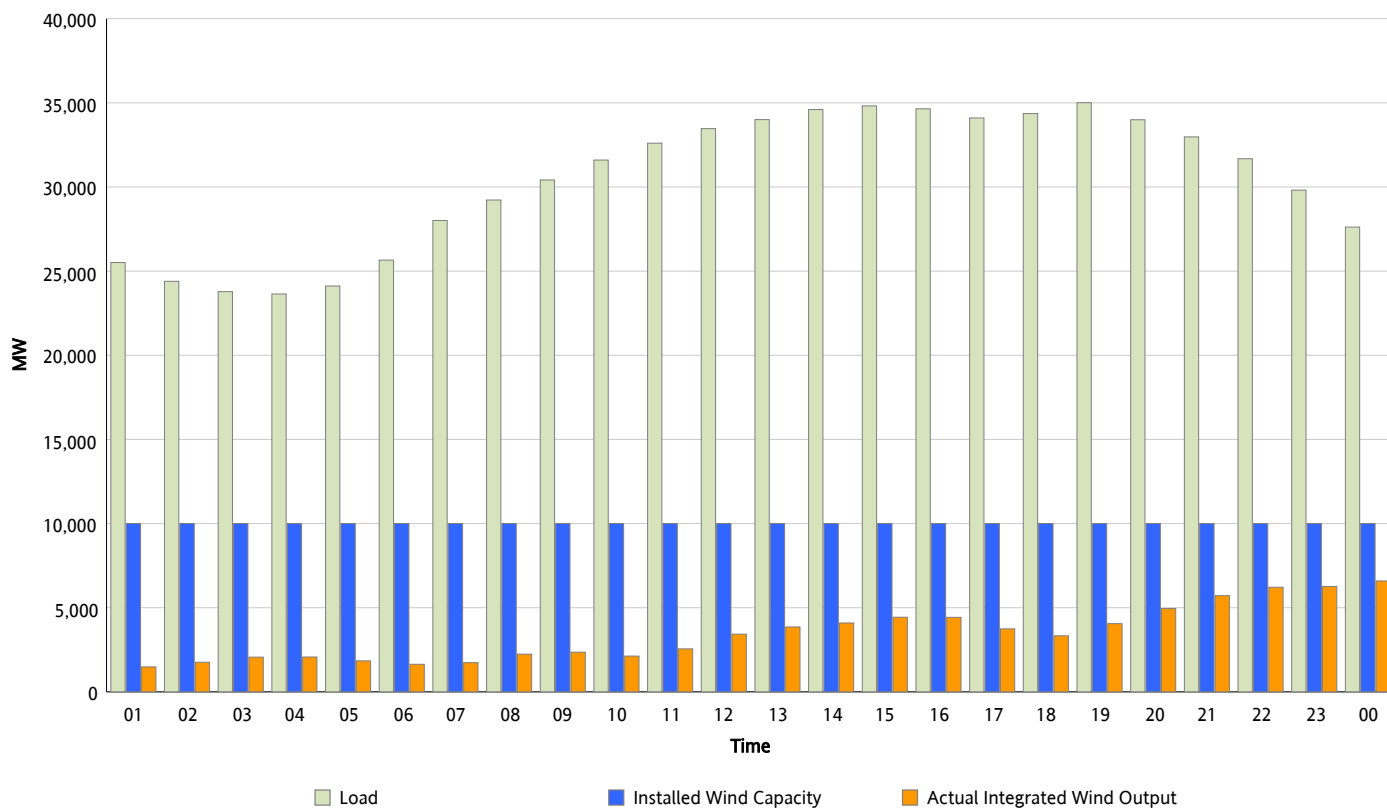


## ERCOT Grid Operations

### Wind Integration Report : 11/21/2012

|                      |           |
|----------------------|-----------|
| Peak Load            | 35,005 MW |
| Load Peak Hour (HE)  | 19        |
| Wind Over Peak       | 4,054 MW  |
| Wind Record 11/10/12 | 8,521 MW  |
| Max Wind Value*      | 6,692 MW  |
| Wind Peak Time       | 23:54     |
| Wind Integration %   | 24.94 %   |

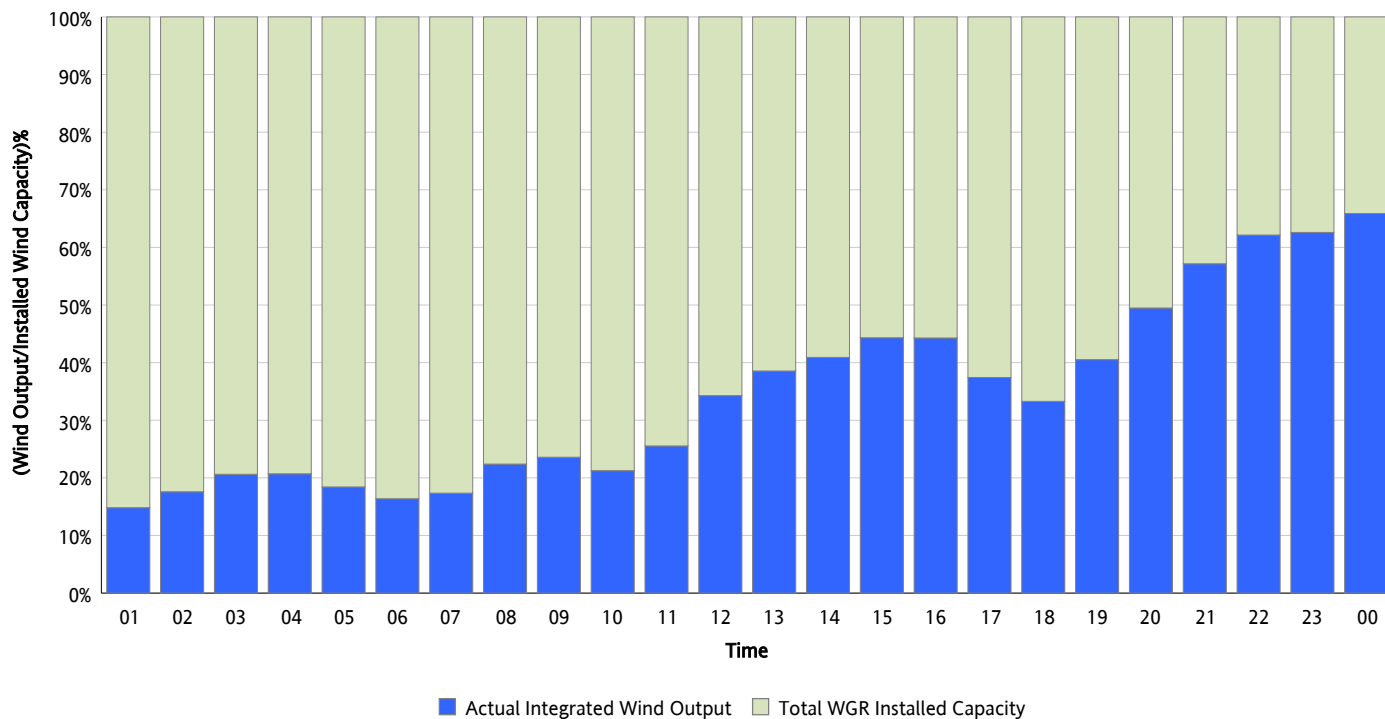
**Hourly Average Actual Load vs. Actual Wind Output**  
11/21/2012



\* Wind Record and Wind Max represent instantaneous values and the rest of the values are integrated over the hour

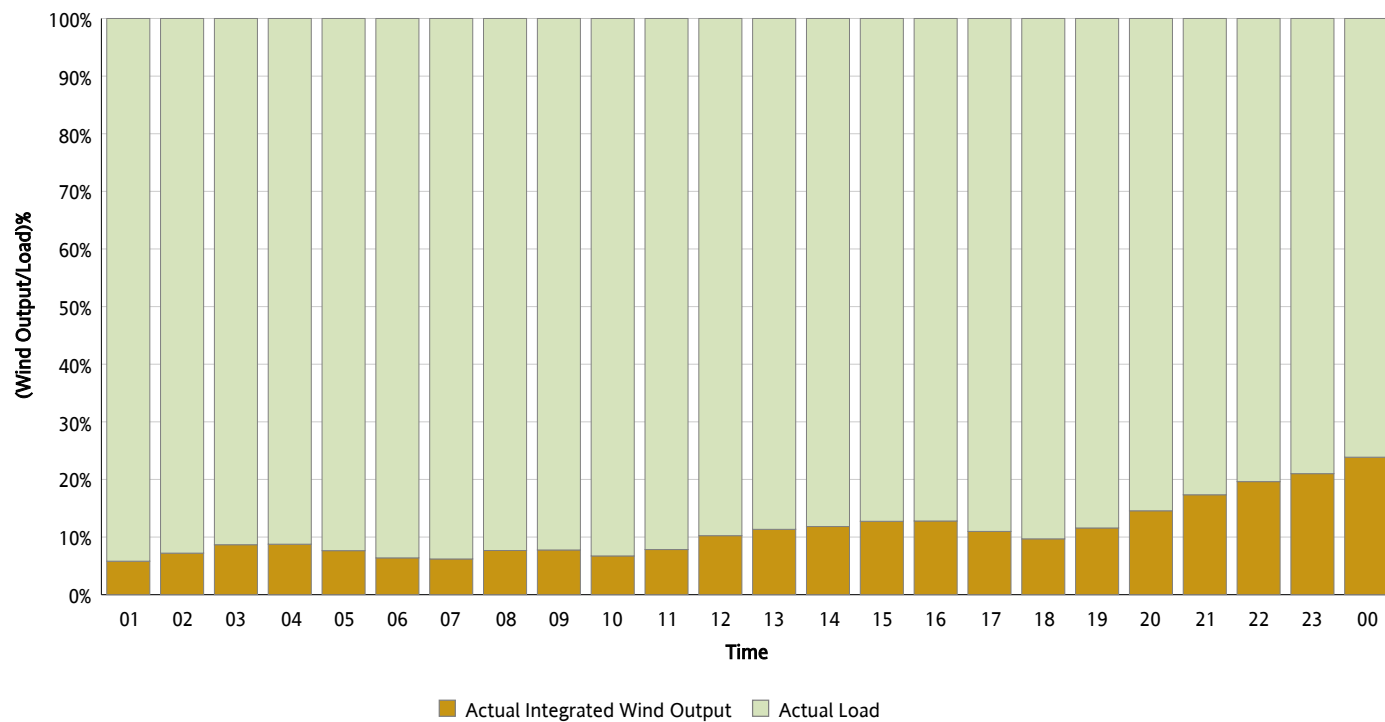
## Actual Wind Output as a Percentage of the Total Installed Wind Capacity

11/21/2012



## Actual Wind Output as a Percentage of the ERCOT Load

11/21/2012



## ERCOT Load vs. Actual Wind Output

11/14/2012 - 11/21/2012

